

**SFRP1 Antibody (C-Term)**  
Peptide-affinity purified goat antibody  
Catalog # AF2829a**Specification**

---

**SFRP1 Antibody (C-Term) - Product Information**

Application	IHC, E
Primary Accession	<a href="#">Q8N474</a>
Other Accession	<a href="#">NP_003003.3</a> , <a href="#">6422</a>
Reactivity	Human
Predicted	Mouse
Host	Goat
Clonality	Polyclonal
Concentration	0.5 mg/ml
Isotype	IgG
Calculated MW	35386

**SFRP1 Antibody (C-Term) - Additional Information****Gene ID** 6422**Other Names**

Secreted frizzled-related protein 1, FRP-1, sFRP-1, Secreted apoptosis-related protein 2, SARP-2, SFRP1, FRP, FRP1, SARP2

**Dilution**

IHC~~1:100~500

E~~N/A

**Format**

0.5 mg/ml in Tris saline, 0.02% sodium azide, pH7.3 with 0.5% bovine serum albumin

**Storage**

Maintain refrigerated at 2-8°C for up to 6 months. For long term storage store at -20°C in small aliquots to prevent freeze-thaw cycles.

**Precautions**

SFRP1 Antibody (C-Term) is for research use only and not for use in diagnostic or therapeutic procedures.

**SFRP1 Antibody (C-Term) - Protein Information****Name** SFRP1**Synonyms** FRP, FRP1, SARP2**Function**

Soluble frizzled-related proteins (sFRPS) function as modulators of Wnt signaling through direct interaction with Wnts. They have a role in regulating cell growth and differentiation in specific cell types. SFRP1 decreases intracellular beta-catenin levels (By similarity). Has antiproliferative effects on vascular cells, in vitro and in vivo, and can induce, in vivo, an angiogenic response. In vascular cell cycle, delays the G1 phase and entry into the S phase (By similarity). In kidney development, inhibits tubule formation and bud growth in metanephroi (By similarity). Inhibits WNT1/WNT4-mediated TCF- dependent transcription.

**Cellular Location**

Secreted. Note=Cell membrane or extracellular matrix-associated. Released by heparin-binding

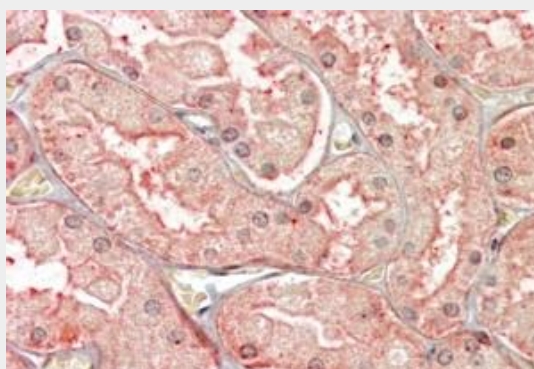
**Tissue Location**

Widely expressed. Absent from lung, liver and peripheral blood leukocytes. Highest levels in heart and fetal kidney Also expressed in testis, ovary, fetal brain and lung, leiomyomal cells, myometrial cells and vascular smooth muscle cells. Expressed in foreskin fibroblasts and in keratinocytes

**SFRP1 Antibody (C-Term) - Protocols**

Provided below are standard protocols that you may find useful for product applications.

- [Western Blot](#)
- [Blocking Peptides](#)
- [Dot Blot](#)
- [Immunohistochemistry](#)
- [Immunofluorescence](#)
- [Immunoprecipitation](#)
- [Flow Cytometry](#)
- [Cell Culture](#)

**SFRP1 Antibody (C-Term) - Images**

AF2829a (3.8 µg/ml) staining of paraffin embedded Human Kidney. Steamed antigen retrieval with citrate buffer pH 6, AP-staining.

**SFRP1 Antibody (C-Term) - References**

Secreted frizzled-related protein 1 loss contributes to tumor phenotype of clear cell renal cell carcinoma Gumz ML, Zou H, Kreinest PA, Childs AC, Belmonte LS, LeGrand SN, Wu KJ, Luxon BA, Sinha M, Parker AS, Sun LZ, Ahlquist DA, Wood CG, Copland JA Clin Cancer Res. 2007 Aug 15;13(16):4740-9 PMID: 17699851